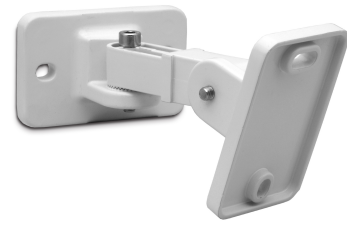


# COLSBRA

Bracket for easy tilting and rotating of COLS sound columns



COLSBRA is an adjustable bracket for our column speakers (COLS41, COLS81 and COLS101). This item is available as a separate accessory, and allows easy tilting and turning of the column speakers.

Sprocket hinges make sure the speakers stay in the angle the installer positioned them in.

The sprockets are fastened with allen screws.

The brackets are made of die cast aluminum, and the allen screws are out of stainless steel. In combination with the aluminum of our column series this is your 100% rust free solution for in- and outdoor use!

## TECHNICAL SPECIFICATIONS

height in mm	82	width in mm	35
depth in mm	93	colour	white
Net weight product (kg)	0,10		

MORE PICTURES

