

KUBO3T-BL

3" compact design full range cabinet loudspeaker, black



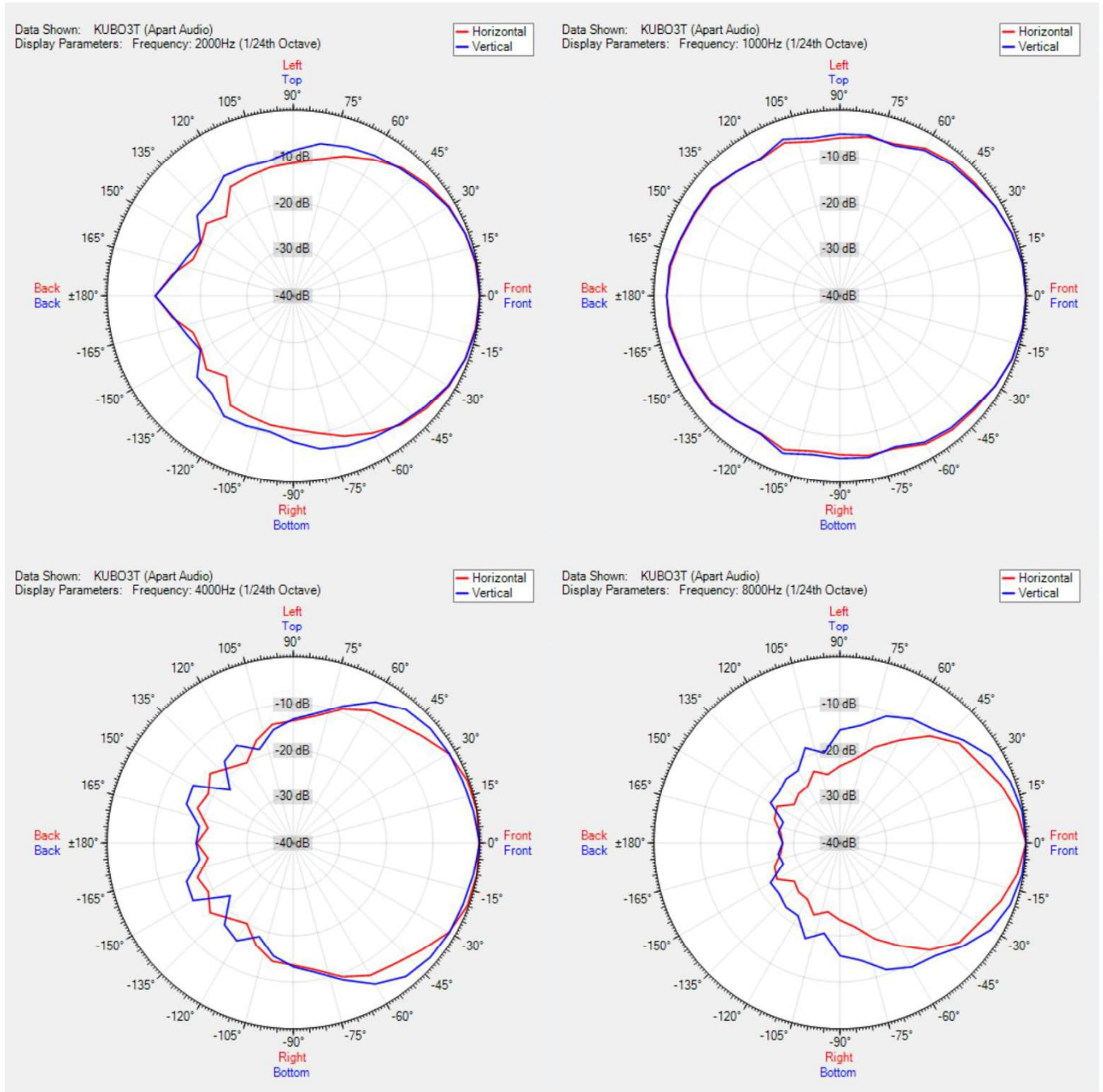
The symmetrical cube-shaped designed KUBO3T comes with a 3" full-range driver unit and bass reflex port. It can be used as a 70/100 volt or low impedance 16 ohms loudspeaker producing up to 40 watts dynamic power. The K-Mount bracket offers easy cable management and 140° vertical or horizontal mounting flexibility. Combined with the special designed fixing K-bolts you can install the loudspeaker in a safe and comfortable way on any type of wall or ceiling.

Easy daisy chaining of multiple KUBO loudspeakers can be done via the in & link connection with euroblock connectors. The installer friendly end-caps, held in place by 14 integrated strong neodymium magnets, hide all connections and bracket hardware on both sides. This top-notch product offers amazing sound quality and performance in a discrete and neutral housing fitting any kind of interior.

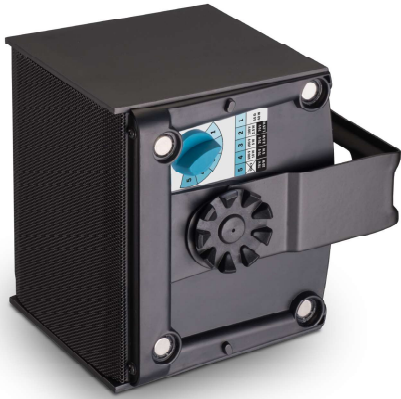
TECHNICAL SPECIFICATIONS

height in mm	125	width in mm	131
depth in mm	109	loudspeaker system	full range
woofer size in inch	3	woofer cone material	polypropylene
mounting system	U-bracket	colour	black / white
100V transformer power taps in watts	10 - 5 - 2.5	70V transformer power taps in watts	10 - 5 - 2.5 - 1.25
impedance (ohms)	16	low impedance dynamic power in watts	40
low impedance RMS power in watts	25	SPL 1W/1m in dB	89
max SPL 1m in dB	101	frequency response in Hz	94 - 20K
main construction material	ABS plastic	grille main material	steel
IP rating		Horizontal dispersion angle 1000 Hz	180°
Vertical dispersion angle 1000 Hz	180°	closest RAL colour (subject to deviations)	RAL9016 (W) / RAL9011 (BL)
Net weight product (kg)	1,18		

POLAR PLOTS

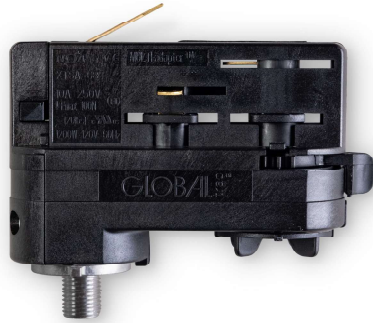


MORE PICTURES





ACCESSORIES



LRAPRE-BL

Premium light rail adaptor KUBO3/5,SDQ5P,OVO5, pack of 2



LRABAS-BL

Basic light rail adaptor KUBO3/5, SDQ5P, OVO5, pack of 10